

BLUltra Prestained Protein Ladder

Cat No. PM001-0500
Cat No. PM001-0025

Size: 500 µl
Size: 25 µl

- 3 µl or 5 µl per loading for clear visualization during electrophoresis on 15-well or 10-well mini-gel, respectively.
- 2.5 µl per well for general Western transferring.

Description

The BLUltra Prestained Protein Ladder is a three-color protein standard with 10 pre-stained proteins covering a wide range of molecular weights from 6.5 to 270 kDa. Proteins are covalently coupled with a blue chromophore except for three reference bands (two orange bands at 30 kDa and 270 kDa and one green band at 52 kDa) when separated on SDS-PAGE (Tris-glycine buffer). The BLUltra Prestained Protein Ladder is designed for monitoring protein separation during SDS-polyacrylamide gel electrophoresis and verifying Western transfer efficiency on membranes (PVDF, nylon, or nitrocellulose) and for approximating the size of proteins. The ladder is supplied in the gel loading buffer and is ready to use.

Storage Buffer

62.5 mM Tris-H3PO4 (pH 7.5 at 25 °C), 1 mM EDTA, 2% SDS, 10 mM DTT, 1 mM NaN3, 33% glycerol.

Quality Control

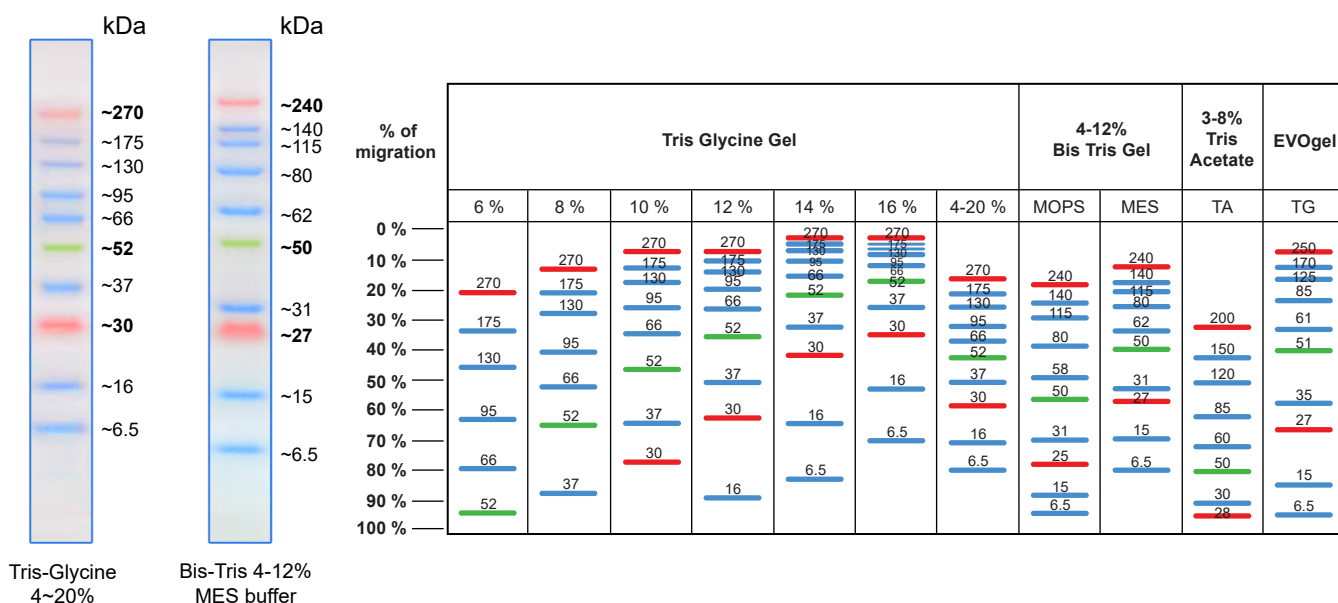
Under suggested conditions, BLUltra Prestained Protein Ladder resolves 10 major bands in 4-12% Bis-Tris Gel (MES buffer) and after Western blotting to the nitrocellulose membrane.

Storage

Stable for up to 2 weeks at 25°C.

Stable for up to 3 months at 4°C.

For long term storage, store at -20°C.



All products are for research use only.

Note: The apparent molecular weight (kDa) of each protein has been determined by calibration against unstained protein standards; supplemental data should be considered for more accurate adjustment in different electrophoresis conditions.