

## Interleukin-10 (IL-10), Human



Cat. No. SR112-0100  
Cat. No. SR112-0020  
Cat. No. SR112-0005

Size: 100 µg  
Size: 20 µg  
Size: 5 µg

### Description

Interleukin-10 is a multifunctional cytokine produced by a variety of cell types including T helper cells activated B cells and activated macrophages. Interleukin-10 regulates immune-mediated inflammation and modulates the function of cells such as lymphocytes, monocytes, natural killer cells and dendritic cells.

### Expression System

*Escherichia coli*

### Sequence

MSAPFSFLSNVKNYFMRIIKYEFILNDALNQSIIRANDQYL TAAALHNLDEAVKFDMM  
GAYKSSKDDAKITVILIRISKTQLYVTAQDEDQPVLLKEMPEIPKTITGSETNLLFFW  
ETHGTKNYFTSVAHPNLFIAATKQDYVWVCLAGGPPSITDFQILENQA with polyhistidine  
tag at the C-terminus.

**Species** Human

**Tag** polyhistidine tag at the C-terminus

### Endotoxin Level

<0.01 EU per 1 µg of the protein by the LAL method.

### Activity

Measure by its ability to induce MC/9-2 cells proliferation.

The ED<sub>50</sub> for this effect is <1 ng/mL.

The specific activity of recombinant human IL-10 is approximately >1x10<sup>6</sup> IU/ mg.

**Purity** >98% as determined by SDS-PAGE. Ni-NTA chromatography

### Formulation

The protein was lyophilized from a solution containing 1X PBS, pH 8.0.

### Reconstitution

Unopened ampoules can be stored at -20°C or -80°C.

Need not spin the ampoule. Open the cap carefully, then dissolve the lyophilized protein with sterile water for a 100 µg/mL concentration or according to the product's Certificate of Analysis (CoA). Rinse the inner side of the ampoule gently and stand

for at least 20 minutes at room temperature. (Important Note: Do Not Vortex!) Use the reconstituted solution immediately or store it by distributing it to aliquots and store at -20 °C. (Avoid repeated freeze-thaw cycles) We recommend diluting the solution to working concentration by using buffers or medium containing a carrier\*. (Do not dilute the working solution with water, which may cause protein degradation.)

\*Carriers: 0.1% BSA or 5% HSA or 10% FBS.

### Storage

Lyophilized protein should be stored at -20°C.

This product is stable for one year upon receipt, when handled and stored as instructed.

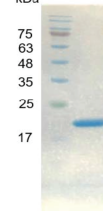
Upon reconstitution, protein aliquots should be stored at -20°C or -80°C.

Avoid repeated freeze/thaw cycles.

### Note

Please use within one month after protein reconstitution.

kDa



SDS-PAGE analysis of recombinant human IL-10

### Related Ordering Information

| Cat. No.   | Description                                  | Size   |
|------------|--|--------|
| CC103-0500 | DMEM, High Glucose                           | 500 ml |
| CC109-0500 | RPMI 1640                                    | 500 ml |
| CC113-0500 | DMEM/F-12                                    | 500 ml |
| PC203-0600 | 60mm Tissue Culture Dish, with Gripping Ring | 600 ea |
| PC273-0100 | 75T Flask, Plug Seal Cap                     | 100 ea |

### Caution

- > During operation, always wear a lab coat, disposable gloves, and protective equipment.
- > Research Use Only. Not intended for any animal or human therapeutic or diagnostic uses.